

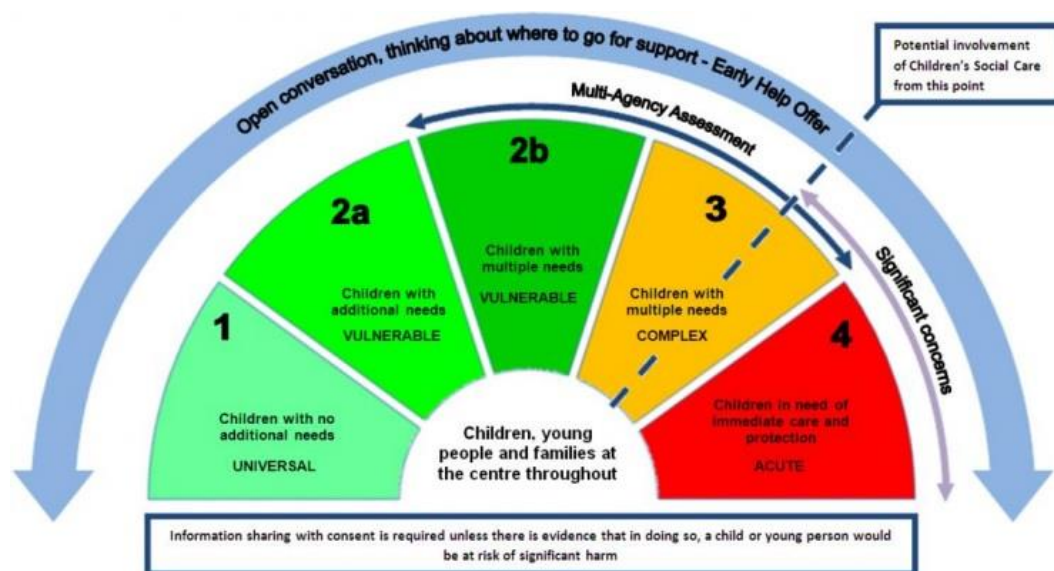
Oak Hill's Offer of Early Help

Everyone needs help at some time in their lives and therefore an ethos of early help is important for any school. The co-ordinated Oak Hill offer of early help is outlined in the table . We believe that early interventions for children or families, in many cases, will prevent children from experiencing harm. Oak Hill offers a number of early preventative measures.

Expert and professional organisations are best placed to provide up-to-date guidance support and intervention on specific safeguarding issues when and if they arise. School will refer to appropriate agencies when help is required to support children, young people or families or to prevent harm.

All staff must be aware of the offer of early help. At all times all staff should consider if there is any offer of early help that we can make in order to help a child thrive. The GCSB 'continuum of need' windscreen is an important diagram to keep in mind for all children.

<http://www.gscb.org.uk/CHttpHandler.ashx?id=47407&p=0>



Our aim is to help pupils and families as early as possible when issues arise: 'the right help at the right time to stop any issues getting worse'. Early help is an approach not necessarily an action. It includes prevention education as well as intervention where necessary or appropriate. In some cases immediate urgent action might be necessary if a child or young person is at risk of immediate harm.

Oak Hill's offer of Early Help

<p>Universal source of help for all families in Gloucestershire: Gloucestershire Family Information Service (FIS)</p>	<p>Gloucestershire Family Information Service (FIS) advisors give impartial information on childcare, finances, parenting and education. FIS are a useful source of information for parents and professionals. They support families, children and young people aged 0-19 years of age (25 for young people with additional needs) and professionals working with these families. They can help link parents up with other organisations that might be able to help or provide the information themselves e.g. parents could ask them about holiday clubs for your children across Gloucestershire.</p>
--	---

	<p>Contact the FIS by emailing:familyinfo@gloucestershire.gov.uk Or telephone: (0800) 542 0202 or (01452) 427362. FIS also have a website which has a wealth of information to support many issues such as childcare and support for children with disabilities. www.glosfamilies.org</p>
GSCB (Gloucestershire Safeguarding Children's Board) website	<p>http://www.gscb.org.uk</p> <p>Important information for parents and professionals across Gloucestershire in relation to keeping children safe and avenues of support including early help options.</p>
Oak Hill's universal support for all pupils and families.	<p>All staff are available in a pastoral capacity should parents have a concern about anything at all. Staff may not have the answer but will try to find out the answer or sign-post parents/other professionals in the right direction. Parents can either talk directly with the staff or telephone the Head.</p>
E-safety	<p>E-safety is a key part of the ongoing (PSHE/SMSC/SRE) curriculum. PACE (parents against child exploitation) UK is a useful website to engage parents with e-safety issues. www.paceuk.info/</p> <p>The NSPCC offer support in regards to eSafety https://www.nspcc.org.uk/preventing-abuse/keeping-children-safe/online-safety/</p> <p>Think U Know offers resources to help educate children as to how to stay safe online https://www.thinkuknow.co.uk/</p>
Bullying (including cyber-bullying)/child death/suicide prevention	<p>All Gloucestershire schools are committed to tackling bullying. We want to know immediately if there any issues with bullying at school so that it can be addressed. It could be that bullying is related to a child's home-school. School can also offer bespoke lessons on anti-bullying for anyone who has suffered bullying to encourage behaviours that might avert it in the future (e.g. assertiveness) or to boost self-esteem. We have a series of teaching resources produced by the Gloucestershire healthy living and Learning Team (www.ghll.org.uk) to support this. In serious cases of bullying parents should contact the police; particularly if there are threats involved. In an emergency call 999. Other sources of help and advice are: www.gscb.org (Gloucestershire Safeguarding children's board) http://www.bullying.co.uk . Gloucestershire Healthy Living and Learning team provide alerts and resources in relation to supporting young people being bullied.</p>
Children or young people with multiple needs (vulnerable) or multiple needs (complex) requiring multi-agency input or assessment.	<p>Within Gloucestershire Targeted Support Teams provide multiagency support for children and families. A phone call to discuss a possible referral is helpful before making written referral. School actively refer to when appropriate:</p> <p>Targeted support Teams (TST): Gloucester (tel:01452 328076), Stroud (tel: 01452 328130); Tewkesbury (tel: 01452 328 250), Cotswold (tel: 01452 328101), Forest of Dean (tel: 01452 328048) and Cheltenham (tel: 01452 328160). These teams are made up of the following professionals: CAF Coordinators; Community Lead Professional - disabled children and young people; Inclusion Co-ordinator; Community Social Worker; Family Support Workers. They all work together from one base so they can recognise and respond to local needs and act as a focal point for co-ordinating support for vulnerable children, young people and their families.</p>

	<p>Support provided includes: Support for school and community based lead professionals working with children and families through the CAF process; Collaboration with social care referrals that do not meet their thresholds, to co-ordinate support within the community; Work in partnership to support children with special educational needs in school; Advice and guidance from a social work perspective on a 'discussion in principle basis' ; Support children with disabilities and their families to access activities and meet specific needs; Advice and guidance to lead professionals and the provision of high quality parenting and family support services to families.</p> <p>Youth Support Team (YST): The Youth Support Team provide a range of services for vulnerable young people aged between 11 - 19 (and up to 25 for young people with special needs), including: - Youth offending - Looked after children - Care leaver's support services (for those aged 16+) - Early intervention and prevention service for 11 - 19 year olds - Support for young people with learning difficulties and/or disabilities - Positive activities for young people with disabilities - Support with housing and homelessness - Help and support to tackle substance misuse problems and other health issues - Support into education, training and employment - Support for teenage parents - For General Enquiries: T: 01452 426900 E: info.glos@prospects.co.uk To make a referral: T: 01452 427923 E: fasttrackteam@prospects.co.uk</p>
Drug concerns	<p>www.infobuzz.co.uk/ : Info Buzz provides individual targeted support around drugs & emotional health issues, development of personal & social skills, and information & support around substance misuse. Drugs education is covered in the school curriculum. The Life Education Bus visits annually as part of this provision PSHE/SMSC) curriculum as a preventative measure.</p>
Mental health concerns *Please note that in Gloucestershire CYPS (children and young people's services) replaced CAMHS (child and adolescent mental health services)	<ul style="list-style-type: none"> • Referral to school nurses may be appropriate. • Referral to CYPS (Gloucestershire's mental health services) via your own GP. • For children/young people/adults with existing mental health difficulties concerns should be discussed with the existing medical professionals (consultant psychiatrists). In an emergency call 999 or 111. • CYPS* Practitioner advice line (for professionals to call) tel: 01452 894272.
Child Sexual exploitation (CSE)	<p>CSE screening tool (can be located on the GSCB website: www.gscb.org.uk/article/113294/Gloucestershire-proceduresand-protocols) This should be completed if CSE suspected. Clear information about Warning signs, the screening tool and Gloucestershire's multi-agency protocol for safeguarding children at risk of CSE are at www.gscb.org . Referrals should be made to Gloucestershire social care and the Gloucestershire Police.</p> <p>Gloucestershire Police CSE Team: The CSE team sits within the Public Protection Bureau Single agency team (Police) DS Nigel Hatten, DC Tess Nawaz, DC Kim Toogood, PC Dawn Collings, PC Nicki Dannatt, PC Jenny Kadodia, PC Christina Pfister (Missing persons Coordinator) 01242 276846 All referrals to go to the Central Referral Unit 01242 247999</p>

	<ul style="list-style-type: none"> • Further information: National Working Group (Network tackling Child Sexual Exploitation) www.nationalworkinggroup.org and PACE UK (Parents Against Child Sexual Exploitation) www.paceuk.info
Domestic violence	<p>The GSCB (Gloucestershire Safeguarding Children’s board) have published a Domestic Abuse pathway for educational settings which is on the GSCB website. If a child or young person is suspected of living at home with a domestically abusive parent or if a young person has domestic abuse in their own relationship then the usual procedures should be followed and a referral made to the children’s helpdesk (tel: 01452 426565). The response will vary according to the age of the young person so that the appropriate agencies are involved. Gloucestershire Domestic Abuse Support Service (GDASS) www.gdass.org.uk</p> <p>MARAC Gloucestershire Constabulary: Multi Agency Risk Assessment Conferences (MARACs) prioritise the safety of victims who have been risk assessed at high or very high risk of harm. The MARAC is an integral part of the Specialist Domestic Violence Court Programme, and information will be shared between the MARAC and the Courts, in high and very high risk cases, as part of the process of risk management.</p>
Teenage relationship abuse	<p>Please see comment about the Domestic abuse pathway for educational settings above (in domestic violence section). www.gov.uk – home office ‘teachers guide to violence and abuse in teenage relationships.’ All violence or suspected violence should be reported the police and/or social care as appropriate. GDASS (Gloucestershire Domestic Abuse Support Service) can be referred to for support.</p> <ul style="list-style-type: none"> • Young person’s GDASS leaflet. • Lead GHLL Teacher for advice and support with curriculum resources (tel: 01452 427208) • Gloucestershire Take a Stand – www.glostakeastand.com <p>Prevention: Resources used in the Wellbeing Curriculum resources – www.ghll.org .</p>
Fabricated and induced illness (FII)	<p>http://www.nhs.uk/Conditions/Fabricated-or-induced-illness for information on behaviours and motivation behind FII. Any professionals suspecting FII must involve the Police, Social Services and follow the child protection procedures outlined in this policy.</p>
Faith abuse	<p>www.gov.uk/government/publications/national-action-plan-to-tackle-child-abuse-linked-to-faith-or-belief for copy of DfE document ‘national action plan to tackle child abuse linked to faith or belief.’ Judith Knight; Diocese of Gloucester Head of Safeguarding/faith abuse contact: jknight@glosdioc.org.uk. For other faith groups contact Jane Bee (GCC LADO).</p>
Female genital mutilation (FGM)	<p>http://www.nhs.uk/Conditions/female-genital-mutilation for NHS information and signs of FGM. Any suspicion of FGM should be referred to the Police and social care. - Meg Dawson (Head) has completed the online home office training, ‘Female Genital Mutilation: Recognising and Preventing FGM’ - E-learning package- http://www.fgmelearning.co.uk/ for interested staff or professionals (free home office e-learning) Posters/leaflets on FGM shared with staff and pupils.</p>
Forced marriage	<p>Forced marriage SPOC (Single Point of Contact) for Forced Marriage in Gloucestershire is Acting DI Jo Mercurio (Gloucestershire Constabulary, Public Protection Bureau). UK Forced Marriage Unit fm@fco.gov.uk Telephone: 020 7008 0151</p>

	<p>Call 999 (police) in an emergency. www.gov.uk/stop-forced-marriage for information on Forced Marriage. Visit Home Office website to undertake Forced Marriage e-learning package https://www.gov.uk/forcedmarriage. GSCB one day Awareness training delivered by Infobuzz www.gscb.org.uk Please see 'Multi-Agency Practice Guidelines- Handling cases of Forced Marriage' for more information and detail https://www.gov.uk/forcedmarriage.</p> <p><i>All practitioners must be aware of this, that is they may only have one chance to speak to a potential victim and thus they may only have one chance to save a life. This means that all practitioners working within statutory agencies need to be aware of their responsibilities and obligations when they come across forced marriage cases. If the victim is allowed to walk out of the door without support being offered, that one chance might be wasted.</i></p> <p>Prevention Freedom Charity- Aneeta Prem 'But it's not fair' book. A book for teenagers looking at forced marriage from the point of view of school friends of the girl who went to India and didn't come back. This book promotes discussion.</p>
Gangs and youth violence	<p>Contact the Avenger Task Force/Inspector Neil Smith (Gloucestershire Police tel: 101). A task force set up to identify potential gang members as vulnerable individuals and potential victims and aims to help them. Prevention: wellbeing curriculum – self-esteem & identity, law & order and considering impact of violence on communities.</p>
Gender-based violence/violence against women and girls (WAWG)	<p>www.gov.uk – home office policy document, 'Ending violence against women and girls in the UK' (June 2014). FGM (Female Genital Mutilation) is violence against women and girls. Hope House SARC (Sexual Assault Referral Centre): 01452 754390 Gloucestershire Rape and Sexual Abuse Centre: 01452 526770</p>
Honour based violence (HBV)	<p>The police have made it a high priority to help communities fight back to tackle both honour based violence and hate crime. The 'Honour Network Help line': 0800 5 999 247 Inspector Fay Komarah is the Gloucestershire Police contact for honour based violence.</p>
Private fostering	<p>http://www.gloucestershire.gov.uk/privatefostering Gloucestershire County council website information on private fostering. Refer to Gloucestershire Children & Families Helpdesk on 01452 426565 or Gloucestershire Private Fostering Social Worker 01452 427874.</p> <p>A private fostering arrangement is essentially one that is made without the involvement of a local authority. Private fostering is defined in the Children Act 1989 and occurs when a child or young person under the age of 16 (under 18 if disabled) is cared for and provided with accommodation, for 28 days or more, by someone who is not their parent, guardian or a close relative. (Close relatives are defined as; step-parents, siblings, brothers or sisters of parents or grandparents).</p>
Radicalisation	<p>Gloucestershire Constabulary: 101 and Jane Bee (LADO) Anti-Terrorist Hotline: 0800 789 321</p> <p>See Appendix 2 for further information on radicalisation.</p> <p>Prevention: Oak Hill teach traditional British values through the curriculum: democracy, rule of law, respect for others, liberty, tolerance of those with different faiths and beliefs and promotion of 'Britishness'.</p>

Sexting	<p>http://www.nspcc.org.uk/preventing-abuse/keeping-childrensafe/sexting (NSPCC website).</p> <p>Gloucestershire Police have a small sexual exploitation team. Contact Sgt. Nigel Hatton.</p>
Trafficking	<p>Serious crime which must be reported to Jane Bee (Gloucestershire LADO) and the Gloucestershire Police.</p> <p>Trafficking can include a young person being moved across the same street to a different address for the purpose of exploitation. It doesn't have to include people, children or young people being moved great distances. See Appendix 2 for further information on Trafficking.</p>
Children who run away (missing persons/missing children)	<p>PC Christina Pfister (Missing persons Coordinator Gloucestershire Police). Tel: 101 (Gloucestershire Police). GSCB Missing Children Protocol http://www.gscb.org.uk : Gloucestershire's protocol on partnership working when children and young people run away and go missing from home or care.</p> <p>ASTRA (Gloucestershire): The ASTRA (Alternative Solutions To Running Away) has the primary aim of reducing the incidence of persistent running away across Gloucestershire. The project provides support, advice and information to young people up to eighteen years old who have run away. This might be from a family home, foster home or from a residential unit. ASTRA provides support after the event to enable a young person to address the causes of running away. The ASTRA project offers young people help and the support required in order to find Alternative Solutions To Running Away. Freephone Telephone number: 0800-389-4992 EXCLUSIVELY for young people who have run away and have no money. All other callers are asked to use the 'ordinary' number (tel: 01452 541599).</p>
CME (Children missing education)	<p>Anyone concerned that a child is missing education (CME) can make a referral to the Education Entitlement and Inclusion team (EEI) at Gloucestershire County Council. Tel: 01452 426960/427360.</p> <p>Children Missing Education (CME) refers to 'any child of compulsory school age who is not registered at any formally approved education activity e.g. school, alternative provision, elective home education, and has been out of education provision for at least 4 weeks'. CME also includes those children who are missing (family whereabouts unknown), and are usually children who are registered on a school roll / alternative provision. This might be a child who is not at their last known address and either: has not taken up an allocated school place as expected, or has 10 or more days of continuous absence from school without explanation, or left school suddenly and the destination is unknown. It is the responsibility of the Education Entitlement and Inclusion team, on behalf of the Local Authority (LA), to: Collate information on all reported cases of CME of statutory school aged children in Gloucestershire maintained schools, academies, free schools, alternative provision academies and Alternative Provision Schools (APS). The EEI Team will also liaise with partner agencies and other LAs and schools across Britain to track pupils who may be missing education and ensure each child missing education is offered full time education within 2 weeks of the date the LA was informed</p>

. Other sources of help and information in Gloucestershire : Gloucestershire MAPPA (Multi-Agency Public Protection Arrangements) are a set of arrangements to manage the risk posed by the most serious sexual and violent offenders (MAPPA-eligible offenders) under the provisions of sections 325 to 327B of the Criminal Justice Act 2003. They should be contacted without delay if there is any concern is reported about a serious sexual or violent offender. (Contact Bernie Kinsella – Chair of MAPPA – detective chief superintendant – Gloucestershire Constabulary – Tel: 101)